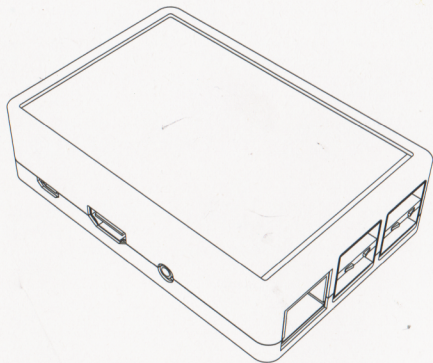
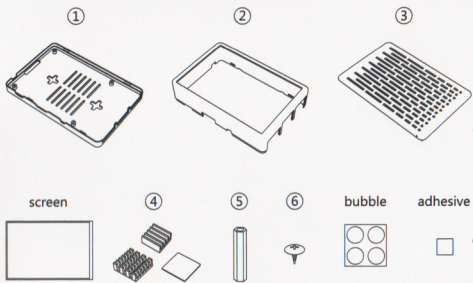


Raspberry pi multi-system 3.5 inch screen

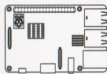


Content

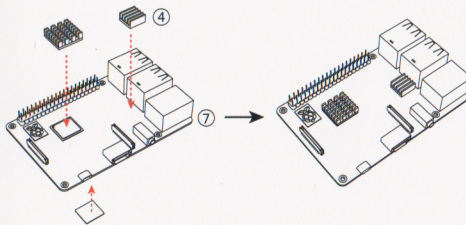


Additional Content

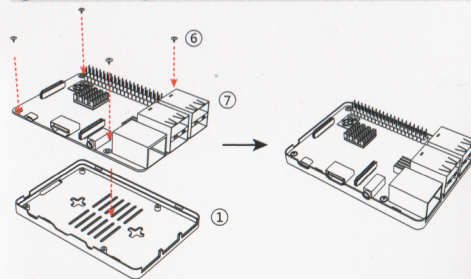
⑦ scanned by tinkerersblog.net



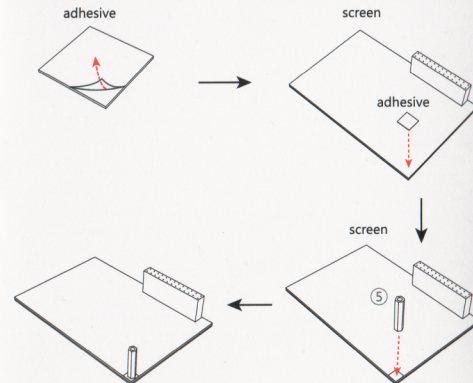
Step 1: Install the three heatsinks to the corresponding position.



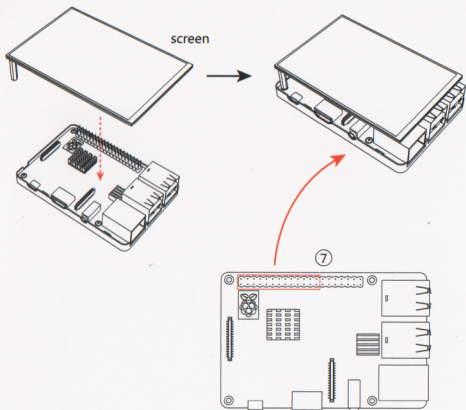
Step 2: Put the raspberry pi upon the plate ①. And tighten them together with the screws.



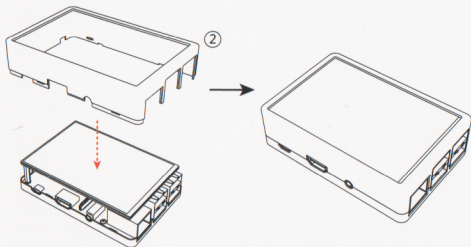
Step 3: Please attention here, due to 3.5 inch screen only have one support which is unable to keep the balance. Take off the paper of adhesive, and put it in the backside of 3.5 inch screen. Adhesive to the nylon column.



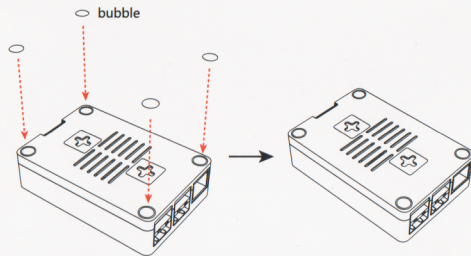
Step 4: Connect the 3.5 inch screen to raspberry pi GPIO interface marked red as following.



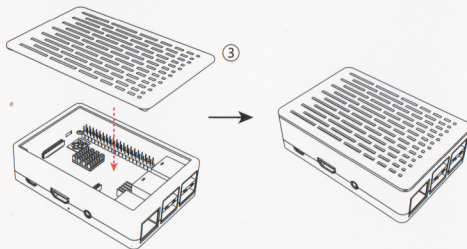
Step 5: Install the plate ②.



Step 6: Install the bubbles in four corners.



Step 7: Please notice here, the top plate of case is only using in the raspberry pi with fan, not using in the raspberry pi with 3.5 inch screen.



Step 1: install the Raspbian official image file:
1. Download the latest Raspbian image file from official
2. Use SDFormatter to format Micro SD card
3. Use Win32DiskImager to burn the official image to Micro SD Card

Step 2: Connect the screen with Raspberry Pi

Step 3: Install the Driver to Raspberry Pi
1. Prepare keyboard and mouse for Pi , connect internet.
2. Execute the following commands
`sudo rm -rf LCD-show`
`git clone https://github.com/goodtft/LCD-show.git`
`chmod -R 755 LCD-show`
`cd LCD-show/`
`sudo ./MHS35-show`

If you have difficult in installing the driver, or if you still can't use the display properly after installing the driver, please try our pre-install driver image for testing.

For Raspberry Pi 3 B/B+, Pi Zero/W
RetroPie game system: https://drive.google.com/open?id=1KQpI3sJ6i3NNQTEruPT83050_Si4iDsi

For Raspberry Pi 3 B/B+
Raspbian: https://drive.google.com/open?id=1rQYonNXkxVH8vcLW_tUKWsmS4fgfJaj
Kali: https://drive.google.com/open?id=1NoHoxBSIP4i8WKCJo761K_-DcYh1IZ7k

scanned by tinkersblog.net