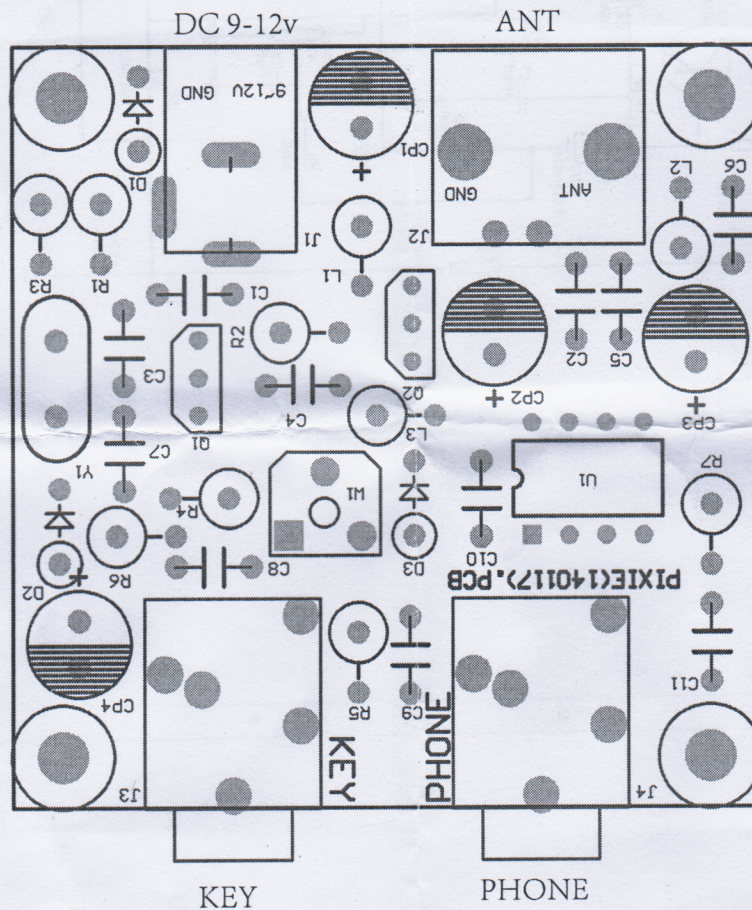


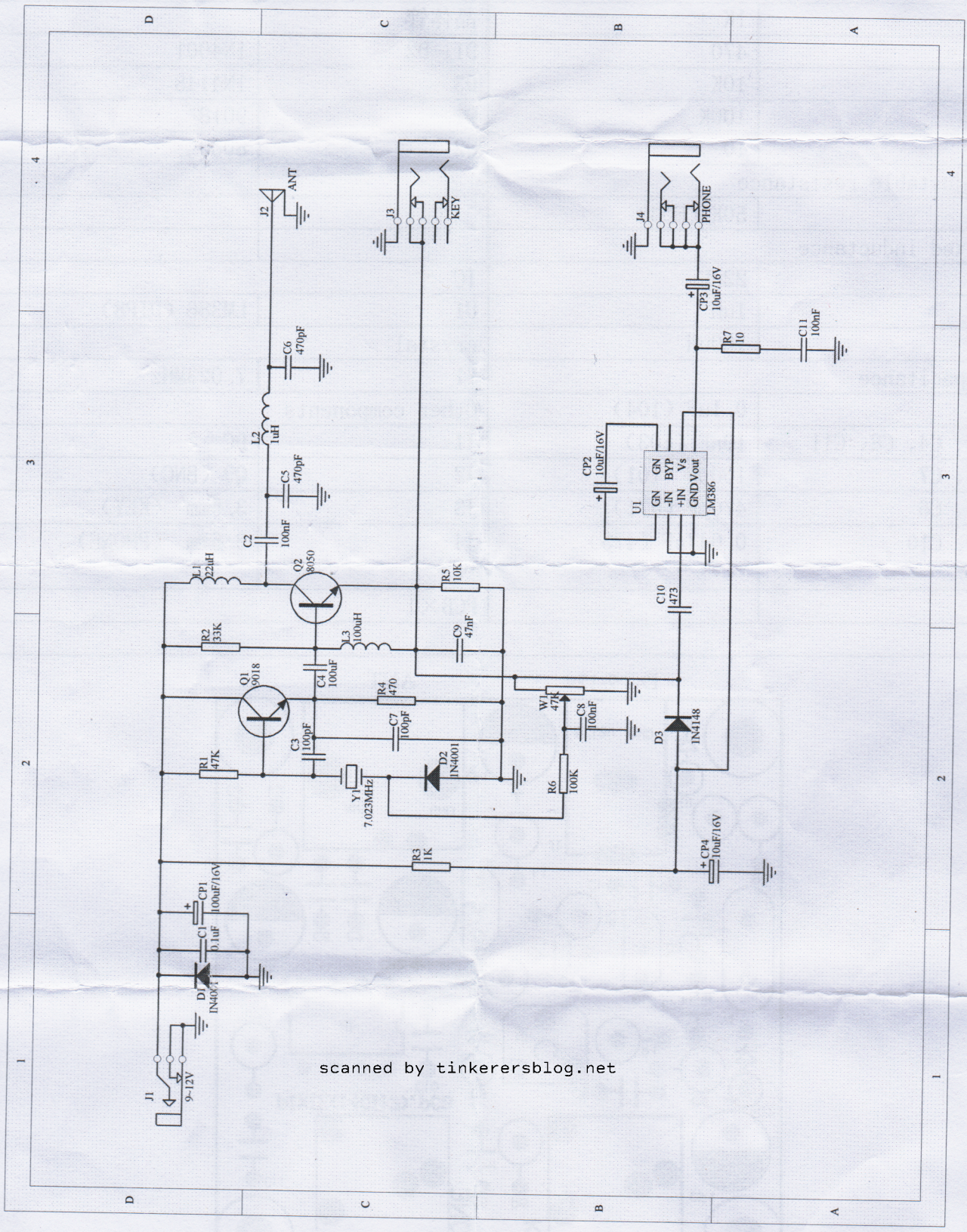
# BNC interface PIXIE the CW transceiver components list

## Component listing

1/4W Fixed resistor		Electrolytic capacitor	
R1	47K	CP1	100uF /16V
R2	33K	CP2、CP3、CP4	10uF /16V
R3	1K	晶体管	
R4	470	D1、D2	1N4001
R5	10K	D3	1N4148
R6	100K	Q1	9018
R7	10	Q2	8050
Adjustable resistance			
W1	50K (503)		
Fixed inductance			
L1	22uH	IC	
L2	1uH	U1	LM386 (DIP8)
L3	100uH	crystal	
capacitance		Y1	7.023MHz
C1	0.1uF (104)	Other components	
C2、C4、C8、C11	10nF (103)	J1	DC
C3、C7	100pF (101)	J2	Q9 (BNC)
C5、C6	470pF (471)	J3	3.5mm (KEY)
C9、C10	0.047uF (473)	J4	3.5mm (PHONE)
		PCB×1	

scanned by tinkersblog.net





scanned by tinkersblog.net